



CCI

CUTTING CRIME
IMPACT

Cutting — Crime Impact

www.cuttingcrimeimpact.eu

DELIVERABLE 7.4

Use scenario presentation for DesignLab 4





CCI
CUTTING CRIME
IMPACT



DELIVERABLE 7.4

Use scenario presentation for DesignLab 4

Deliverable Type

Report

Work Package

WP 7

Dissemination

Public

Month and Date of Delivery

Month 17, February 2020

Leader

USAL

Authors

Dr Anke Schröder, LKA
Francesc Guillén, INT

Programme

H2020

Contract Number

787100

Duration

36 Months

Start

1 October 2018

CONTRIBUTORS

NAME	ORGANISATION
ANKE SCHRÖDER	LKA
FRANCESC GUILLÉN LASIERRA	INT

PEER REVIEWS

NAME	ORGANISATION
CAROLINE L. DAVEY	USAL
ANDREW B. WOOTTON	USAL

REVISION HISTORY

VERSION	DATE	REVIEWER	MODIFICATIONS
1	27/01/20	PROFESSOR CAROLINE.L DAVEY	MINOR EDITS
2	11/02/20	ANDREW B. WOOTTON	MINOR EDITS

Table of Contents

1	Introduction	5
2	LKA – Feelings of Insecurity Presentation	6
3	INT – Feelings of Insecurity Presentation	25

1 Introduction

This deliverable contains two 'use scenario' PowerPoint presentations on feelings of insecurity

- Lower Saxony context, Germany, LKA
- Catalonia context, Spain (INT)

The presentations were delivered at DesignLab 4 in Barcelona, January 2020.

2 LKA – Feelings of Insecurity Presentation



CCI

CUTTING CRIME
IMPACT

DesignLab 4

LKA – Feelings of Insecurity

Dr Anke Schröder

*State Office for Criminal Investigation of
Lower Saxony*

www.cuttingcrimeimpact.eu

LKA – Feelings of Insecurity

Overview



Feelings of insecurity priorities

Older people (over 65 years) are being deterred from using public transport at certain times – for example, the final subway stop “Alte Heide” in a suburban area of Hannover

Young women (16–25 years) are deterred from using the bars / restaurants / cinema in “Raschplatz”, Hannover city centre — and from walking to and from the area during the evening

Feelings of Insecurity – responsibilities & partners

The police is one player in the crime prevention landscape in Lower Saxony.

The LKA has the political mandate to ward off dangers and protect people from crime. We interpret this task more broadly in order to develop prevention concepts that also address feeling of (in)security.

- Local police is Partner in 200 municipal crime prevention councils
- LKA is a Partner in the Security partnership of Urban development (LPR)
- There are community projects at a neighbourhood level through the LAG Social Focal Points
- Different Projects on different levels
- Centre of Excellence in Urban Design and Planning (KURBAS)



Feelings of Insecurity priorities



- Use of public transport 'hubs', such as the final stops in the suburban area /agglomeration of Hannover—by older people (65-79 years & over 80 in particular)
- Use of public space for (cultural) events, cinema, pubs and clubs, parks, etc. at night in Raschplatz, Hannover by young women (16-20 years)
- Use of neighbourhood parks, green spaces, sports, playgrounds, etc. by (Design for all for divers claims of use)
- Feeling safe in your own home. Protective measures against burglary (technical and neighbourly)



Scenario A

Older people (over 65 years) are being deterred from using public transport at certain times – for example, the final subway stop “Alte Heide” in a suburban area of Hannover



Scenario A

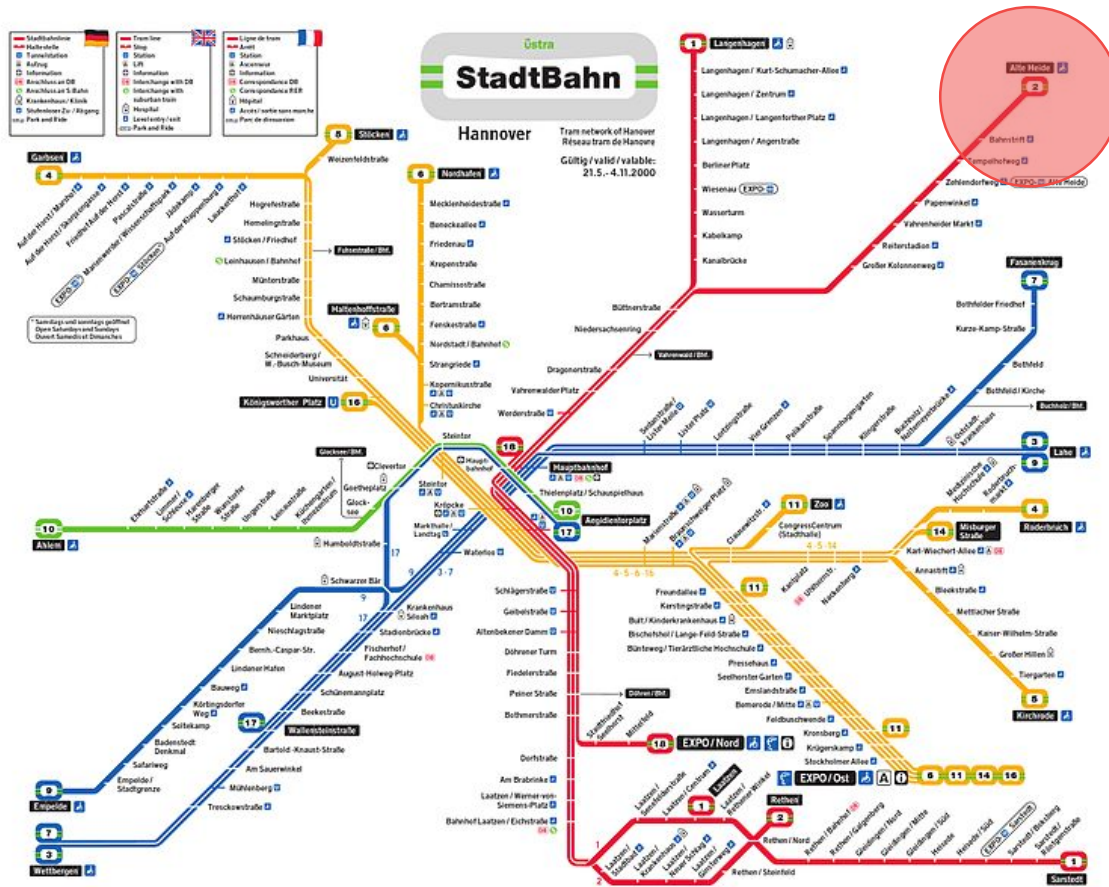
Older people (over 65 years) are being deterred from using public transport at certain times – for example, the final subway stop “Alte Heide” in a suburban area of Hannover

- The Final stop of the subway No2 “Alte Heide” provides access to the district Sahlkamp, north-east of Hannover, 8 km away from the City Centre.



Scenario A

Older people (over 65 years) are being deterred from using public transport at certain times – for example, the final subway stop “Alte Heide” in a suburban area of Hannover



- The Final stop of the subway No2 “Alte Heide” provides access to the district Sahlkamp, north-east of Hannover, 8 km away from the City Centre.
- The station was built in 1979—and looks like a 1970s building. It is perceived as a place where people feel unsafe (dark, hiding places, no social control).



Scenario A

Older people (over 65 years) are being deterred from using public transport at certain times – for example, the final subway stop “Alte Heide” in a suburban area of Hannover



- The Final stop of the subway No2 “Alte Heide” provides access to the district Sahlkamp, north-east of Hannover, 8 km away from the City Centre.
- The station was built in 1979—and looks like a 1970s building. It is perceived as a place where people feel unsafe (dark, hiding places, no social control).
- Crime (knives attacks among groups) and antisocial behaviour (alcohol drinking, verbal attacks).
- In our small-scale situation picture, however, we have not been able to measure any unusual features in relation to the number of inhabitants.



Scenario A

Older people (over 65 years) are being deterred from using public transport at certain times – for example, the final subway stop “Alte Heide” in a suburban area of Hannover



- The Final stop of the subway No2 “Alte Heide” provides access to the district Sahlkamp, north-east of Hannover, 8 km away from the City Centre.
- The station was built in 1979—and looks like a 1970s building. It is perceived as a place where people feel unsafe (dark, hiding places, no social control).
- Crime (knives attacks among groups) and antisocial behaviour (alcohol drinking, verbal attacks).
- In our small-scale situation picture, however, we have not been able to measure any unusual features in relation to the number of inhabitants.
- Negative reporting



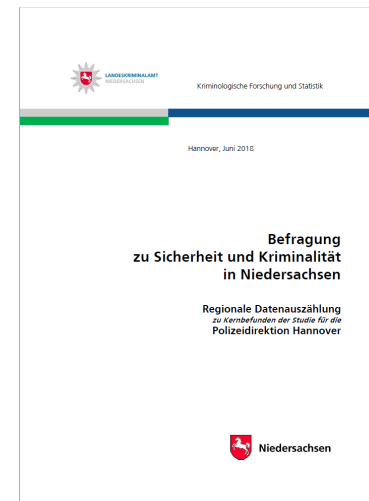
Scenario A: Evidence of feelings of insecurity

- In Sahlkamp, more than 20% kids and young people under 18 years / up to 27% people over 60 years. (Structural data of the districts and urban districts 2019, State capital of Hanover 2019: Statistical Reports).



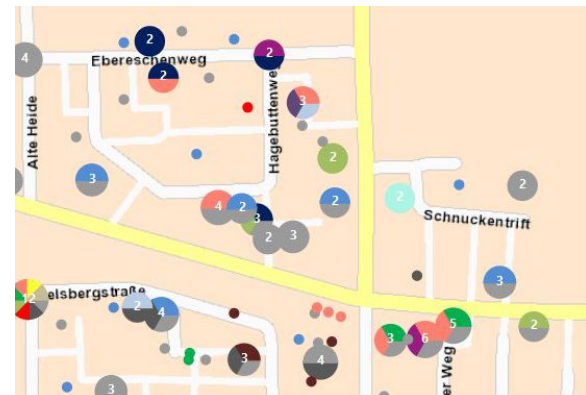
Scenario A: Evidence of feelings of insecurity

- In Sahlkamp, more than 20% kids and young people under 18 years / up to 27% people over 60 years. (Structural data of the districts and urban districts 2019, State capital of Hanover 2019: Statistical Reports).
- Avoidant behaviour due to fear of crime: Old people (over 80 years) avoid using public transport in the evening. (LKA Hannover 2017: Victim Survey of Security and Crime in Lower Saxony (2013-2017) regional data analysis).



Scenario A: Evidence of feelings of insecurity

- In Sahlkamp, more than 20% kids and young people under 18 years / up to 27% people over 60 years. (Structural data of the districts and urban districts 2019, State capital of Hanover 2019: Statistical Reports).
- Avoidant behaviour due to fear of crime: Old people (over 80 years) avoid using public transport in the evening. (LKA Hannover 2017: Victim Survey of Security and Crime in Lower Saxony (2013-2017) regional data analysis).
- Centre of Competence: small scale analysis of crime and incivilities (display rate) qualitative method of observation with local Police, City Planning and housing companies.



Scenario B

Young women (16–25 years) are deterred from using the bars / restaurants / cinema in “Raschplatz”, Hannover city centre — and from walking to and from the area during the evening





© Gerd Fahrenhorst

Scenario B

Young women (16–25 years) are deterred from using the bars / restaurants / cinema in “Raschplatz”, Hannover city centre — and from walking to and from the area during the evening

- Raschplatz was build in 1976. It is a mistaken interpretation of Urban development model of the car-friendly city.
- On minus 1 level, the Raschplatz connects the city centre at Kröpcke to the district Lister Platz. It was intended as an urban development axis.





© Gerd Fahrenhorst

Scenario B

Young women (16–25 years) are deterred from using the bars / restaurants / cinema in “Raschplatz”, Hannover city centre — and from walking to and from the area during the evening

- Raschplatz was build in 1976. It is a mistaken interpretation of Urban development model of the car-friendly city.
- On minus 1 level, the Raschplatz connects the city centre at Kröpcke to the district Lister Platz. It was intended as an urban development axis.
- Raschplatz was rebuild in 2009/2010
- It is a crossroads of the means of transport
- Different usage during the day and at night
- During the day, Raschplatz is a crossing area without any quality of stay. At night, bars clubs, restaurants and cinemas open.
- Numerous homeless people, drinkers and drug addicts meet along the paths and leaps.
- Many citizens avoid the underground connection and prefer to walk above ground.



Scenario B: Evidence of feelings of insecurity

During the night, Raschplatz turns into the most visited place to party, meet on the stairs or go to the Cinema, Shisha Bars, Restaurants etc.

Many young people from the City and from the region come to Raschplatz

The clash of celebrating people, homeless and drinkers, coupled with the lack of spatial boundaries, leads to insecurity.

Project: “bahnhof.sicher” by the local Police, federal police, municipal regulatory service and private security companies (Presence, prevention, video and public relations).



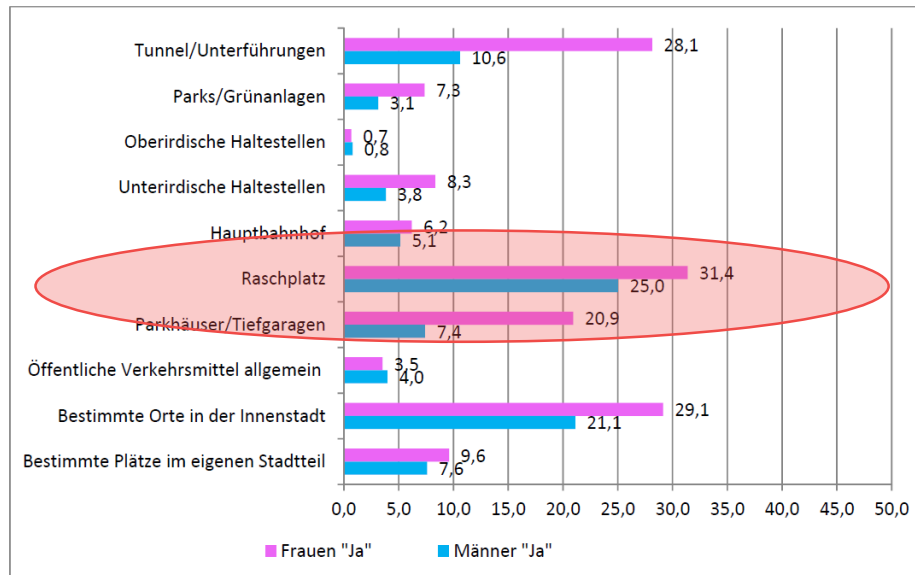
Scenario B: Previous action

Different data available

- Police Crime data: Raschplatz is the no 1 hotspot in Lower Saxony
- Small scale Crime Analysis: Men are usually victims of violence at the Raschplatz, but the feeling of insecurity among women is exorbitantly higher.

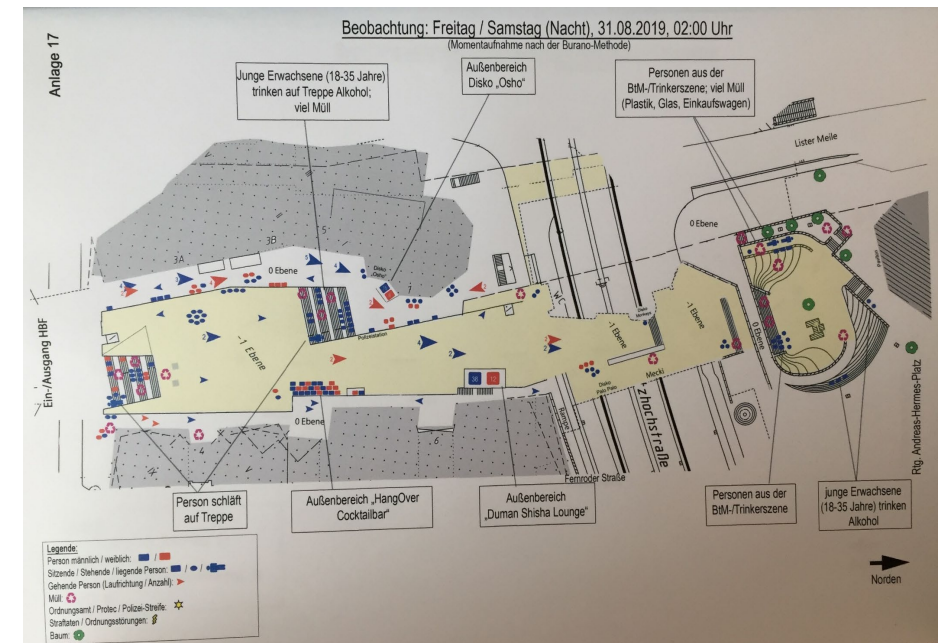
Avoidance behaviour due to Fear of Crime

Avoid certain places due to a feeling of insecurity during the day, women and men in Comparison, answers with "Yes", percent of respondents (valid information only: 1739 in total, 1046 yes)



City of Hannover 2018: Public safety and order in public places, p.26)

Analysis of Usage of public space



City of Hannover 2018: Public safety and order in public places, p.26)

Thank you!

www.cuttingcrimeimpact.eu



CCi
CUTTING CRIME
IMPACT

3 INT – Feelings of Insecurity Presentation



CCI

CUTTING CRIME
IMPACT

DesignLab 4

INT – Feelings of Insecurity

Francesc Guillén Lasierra
Departament d'Interior (INT),
Generalitat de Catalunya

www.cuttingcrimeimpact.eu

INT – Feelings of Insecurity

Overview



Feelings of insecurity priorities

Scenario A: Local residents with children deterred from using public spaces

Scenario B: Women (16–30 years) are deterred from walking home

Feelings of Insecurity Introductory comments (I)

Shocking situation:

Last Summer

- Highest level of victimisation, with serious affectation of the Tube (thefts).
- No general meaningful changes in behaviour
 - Full Bars and Terraces
 - Record of tube users (407.000.000 trips)
 - Record of tourists (20.000.000 nights + cruisers)



Feelings of Insecurity Introductory comments (II)

Need for concrete approaches:

- Identification of behaviour changes in concrete situations.
- Particular places, particular times.

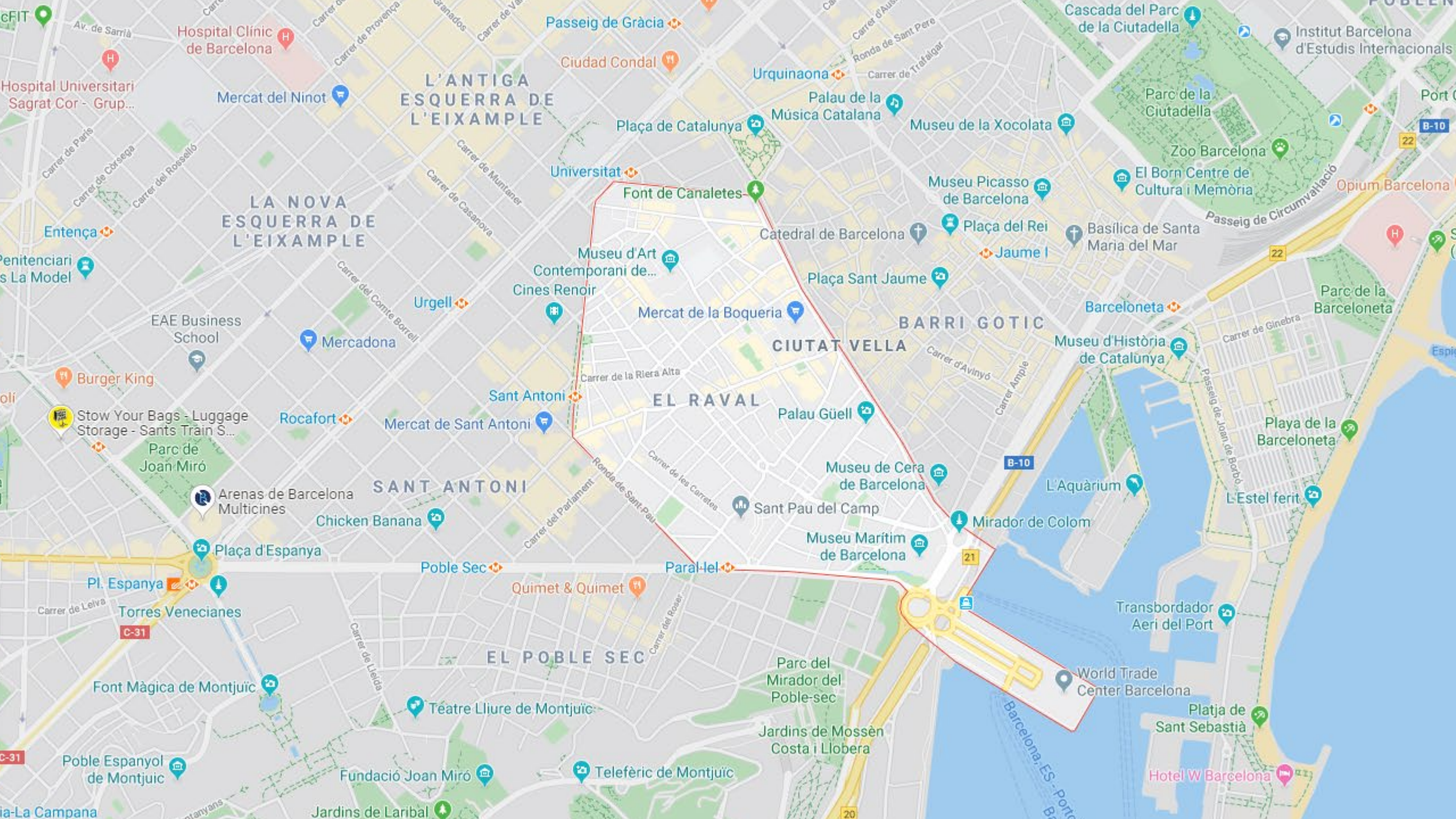
Reason: changes in victimisation were not general, but concentrated in few districts (Ciutat Vella, Eixample, Sant Martí, Sants-Montjuic).



Scenario A

Local residents with children deterred from using public spaces in Raval neighbourhood, Ciutat Vella district of Barcelona – for example, the play areas and public spaces





Hospital Clínic de Barcelona

L'ANTIGA ESQUERRA DE L'EIXAMPLE

LA NOVA ESQUERRA DE L'EIXAMPLE

EL RAVAL

SANT ANTONI

EL POBLE SEC

CIUTAT VELLA

BARRI GOTIC

L'Aquàrium

Platja de Sant Sebastià

Hospital Universitari Sagrat Cor - Grup...

Mercat del Ninot

Passeig de Gràcia

Ciudad Condal

Urquinaona

Palau de la Música Catalana

Museu de la Xocolata

Cascada del Parc de la Ciutadella

Institut Barcelona d'Estudis Internacionals

Parc de la Ciutadella

Zoo Barcelona

El Born Centre de Cultura i Memòria

Opium Barcelona

Entença

Penitenciaris La Model

EAE Business School

Mercadona

Museu d'Art Contemporani de...

Cines Renoir

Mercat de la Boqueria

Catedral de Barcelona

Museu Picasso de Barcelona

Plaça del Rei

Basilica de Santa Maria del Mar

Jaume I

Passeig de Circumvallació

Parc de la Barceloneta

Burger King

Stow Your Bags - Luggage Storage - Sants Train S...

Parc de Joan Miró

Arenas de Barcelona Multicines

Chicken Banana

Mercat de Sant Antoni

Sant Antoni

Museu d'Història de Catalunya

Palau Güell

Museu d'Història de Catalunya

Carrer de Ginebra

Playa de la Barceloneta

L'Estel ferit

Plaça d'Espanya

Pl. Espanya

Torres Venecianes

Poble Sec

Ronda de Sant-Paul

Paral·lel

Quimet & Quimet

Museu de Cera de Barcelona

Sant Pau del Camp

Museu Maritim de Barcelona

Mirador de Colom

Transbordador Aeri del Port

World Trade Center Barcelona

Font Màgica de Montjuïc

Teatre Lliure de Montjuïc

Parc del Mirador del Poble-sec

Jardins de Mossèn Costa i Llobera

Poble Espanyol de Montjuïc

Fundació Joan Miró

Telefèric de Montjuïc

Jardins de Laribal

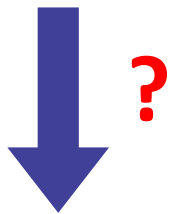
Hotel W Barcelona

Scenario A: Evidence of feelings of insecurity

- Only few by passers (no children, no women)
- No social life on the beat: there are no children playing, not people talking to each other on the benches

Social isolation

Neighbourhood stigmatisation



- Apartments are quite small
(most of them from 45 to 70 sqm)



Scenario A



Scenario A:

<https://beteve.cat/societat/veins-narcopisos-raval-princep-viana/>

- Empty apartments occupied by drug dealers (especially heroin)
- Consumption inside and outside the apartments (syringes left on the beat)
- Violence
- Incivilities



Scenario A:



PARA NOSOTROS NO ES
UNA SERIE, ES LA REALIDAD
EN LA CALLE PRINCEP DE VIANA
OPERAN 2 PUNTOS DE VENTA
DE DROGAS,
Y SON UNA PESADILLA

Ven a apoyarnos

SABADO 18 A LAS 17H

PRINCEP DE VIANA SIN NARCOPISOS



Scenario A: Measures taken so far

Macro Police Raids:

1st) Temporary reduction (displacement)

2nd) Gradual reconstruction of previous situation with some adjustments



Scenario A: Previous action

Macro Police Raids from time to time

Els Mossos donen per acabats els narcopisos

La policia ha tancat 170 pisos on es consumia droga, el 60% al Raval, tot i que admet que persisteixen punts de venda

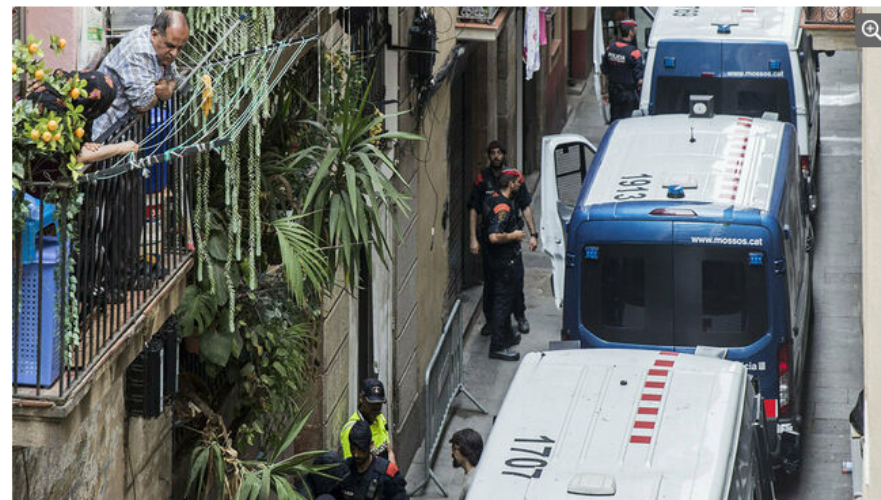
5 min. BARCELONA 28/02/2019 22:42

PAU ESPARCH / JORDI MUMBRÚ

0

Comparteix

Guarda



Un dispositiu dels Mossos d'Esquadra al carrer Sant Climent, al Raval, durant l'estiu de l'any passat, quan es va arribar als 60 narcopisos / PERE VIRGILI

L'estiu del 2017 [els veïns del Raval van alertar](#) que els pisos que quedaven buits s'havien convertit en un negoci: els traficants de droga els ocupaven per transformar-los en punts de venda i també de consum de droga. El fet que els toxicòmans consumissin la droga dins els domicilis va suposar tota una novetat. Els locals van rebre el nom de narcopisos i els Mossos d'Esquadra han tingut moltes dificultats per combatre'ls. Però un any i mig després de l'aparició del fenomen, els Mossos el donen per acabat: diuen que en queden menys de cinc a tot el districte de Ciutat Vella. L'estiu de l'any passat hi va haver fins a 60 narcopisos actius al mateix moment. Amb la desarticulació del fenomen, la policia admet que el tràfic de droga en aquesta zona de Barcelona s'ha tornat a traslladar als punts de venda habituals: a locals i





Edificio donde se ubica uno de los narcopisos del Raval, en la calle Príncipe de Viana / G.A

Los narcopisos regresan con fuerza al Raval

Acció Raval alerta que los traficantes vuelven a vender en una treintena de puntos



Alarma



B Sabadell i BBVA
PATROCINEN NARCOPISOS
ACCIO RAVAL
QUE NO TRAFIQUEN CON TU VIDA



Scenario A:

What to do next?



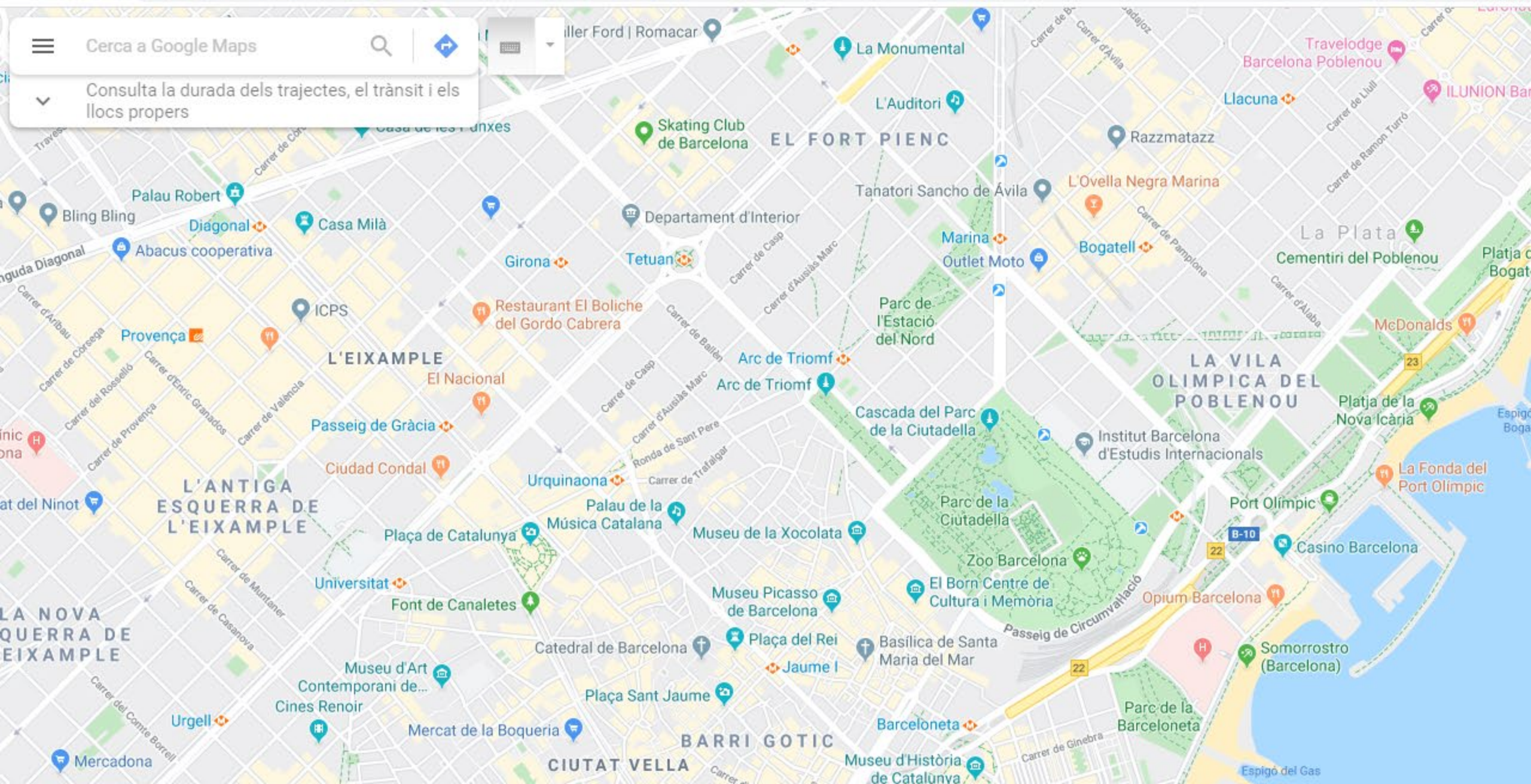
Scenario B

Women (16–30 years) are deterred from walking home through the Olympic Harbour area of Barcelona after a night out



☰ Cerca a Google Maps 🔍 📍

▼ Consulta la durada dels trajectes, el trànsit i els llocs propers



Music Karaoke
LONA

Oak

Restaurant FrescoCo

Asesoría Jurídica Leimar

Restaurante Anfiteatro

Parc del Port Olímpic

Av. del Litoral

Carrer de Salvador Espriu

Ronda Litoral

Av. del Litoral

Carrer de Salvador Espriu

Ronda Litoral

Passeig Marítim del Port

Carrer de Salvador Espriu

Av. del Litoral

Av. del Litoral

TAJ Barcelona

B-10

B-10

Parking Litoral Port

CROWN PO
OLIMF

Coctelería Smar

Av. del Litoral

Passeig Marítim del Port Olímpic

Pierre C
Francesc, please add me on LinkedIn
Hi Francesc, I'd like to follow you on LinkedIn n
LinkedIn

Google

Marc

Festral



Scenario B: Evidence of feelings of insecurity

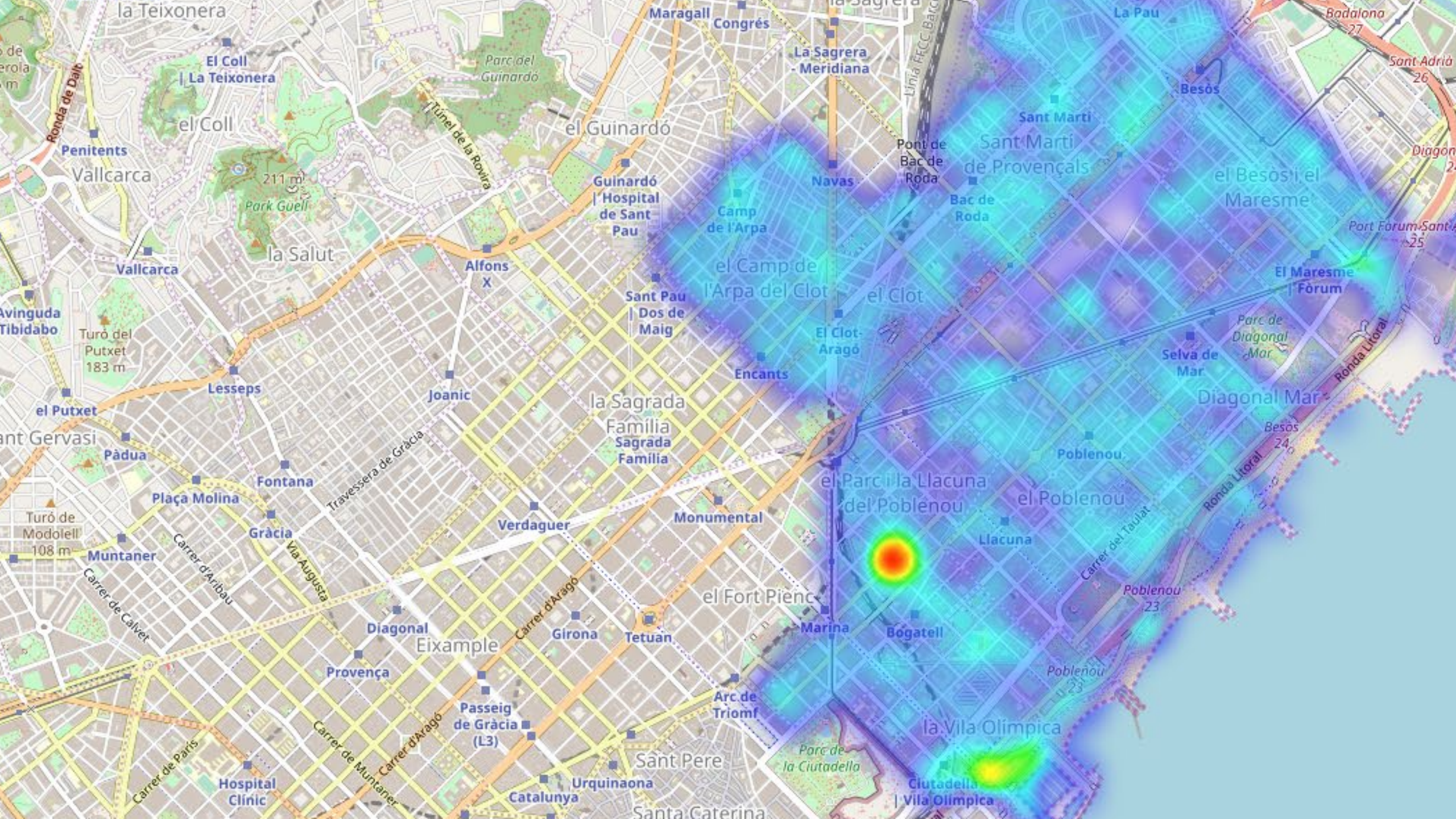
Reduction of women attending leisure facilities.

Reduction of people walking in the surroundings of the Olympic Harbour

Reduction of lonely people attending Olympic Harbour facilities.

Reduction of the use of public transportation in mid distance stops.





Quatre homes apunyalats, un en estat greu, al Port Olímpic de Barcelona

Redacció
05/01/2020 - 11.22 | Actualitzat 05/01/2020 - 13.25

f t + |

TEMA: POLICIAL



Vehicle dels Mossos d'Esquadra

DEL 20 AL 27

BL

VERO

*Ofertas válidas del 20 al 27/01/

Media



Scenario B: Previous action

- Increasing of police patrols
- Fast reaction after incidents.

No meaningful change of the situation

What's next?



Thank you!

www.cuttingcrimeimpact.eu



CCI

CUTTING CRIME
IMPACT



CCI
CUTTING CRIME
IMPACT



University of
Salford
MANCHESTER



DSP



university of
 groningen



POLITIE



Greater Manchester
POLICE



Estonian Police and Border Guard Board



POLICIA
MUNICIPAL
LISBOA



LANDESKRIMINALAMT
NIEDERSACHSEN



Generalitat de Catalunya
**Departament
d'Interior**



DPT-i
Institut für angewandte
Präventionsforschung



European
Forum on
Urban
Security



LOBA CUSTOMER
EXPERIENCE
DESIGN

